

Designing a tile is simple.

How do I design a tile? Use the template provided or send us an original piece of artwork. Original artwork can be something you make with your tile in mind, or you can use a favorite piece of artwork from home or school.

If I don't use the template, what kind of paper should I use? You can use white paper or a color if you prefer. Avoid transparent and lined paper.

Is there a size limit? We can accept artwork up to 12" x 16". If your artwork is larger than 9" x 12" you will have to use your own envelope to return it to us, or bring it to the museum Welcome Desk.

What kind of materials can I use to create my design? Use your favorite materials – paint, markers, oil craypas, crayons and paper collages are very effective. The brighter, the better! Avoid using pencil, light crayon, glitter and metallic materials. Photographs are not acceptable.

What should I draw? Be creative. Your design can include, animals, flowers, people, shapes, abstract designs – anything you want! Please avoid themes that may appear to be violent or inappropriate.

Is text acceptable? Please limit text to your child's initials or first name in the lower right corner. If you prefer, you can select to purchase a solid color tile that will be inscribed with your family or business name.

How do I get my artwork to you? Mail your artwork to us in the envelope provided. If your original artwork is too large to fit in our envelope, please use your own or bring it to the museum. Please do not fold your artwork.

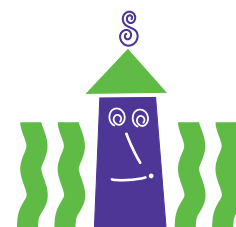
Should I put my name on the artwork? Yes, if you use your own paper, please put your name and phone number on the back of your artwork. Please use a pencil so the name does not show through to the other side.

Will my artwork be returned? Upon request, we can make arrangements to have your artwork returned to you.

When will my tile be installed in the museum? The tiles will be installed in the fall of 2010. In the meantime, look online to view our virtual tile wall at steppingstonesmuseum.org

Is my tile purchase tax-deductible? Yes, tile purchases are 100% tax-deductible.

Who do I contact if I have more questions? Please call 203 899 0606, ext. 281.



Stepping Stones Museum for Children

Mathews Park, 303 West Avenue
Norwalk, Connecticut 06850
steppingstonesmuseum.org